



WAREHOUSING



TRANSPORTATION



HANDLING

We provide specialized,
integrated & prompt services for
all types of cargo worldwide

nadirapermata.com

Integrated Services
Free Shipping Consultation
Wide Network
Talented & Experienced Workforce
Promote Business Ethics



FOR ALL YOUR SHIPPING AND LOGISTICS REQUIREMENT



PROFILE

- ❑ **NADIRA PERMATA MANDIRI** WAS ESTABLISHED IN 2014 AND TURNED INTO A **FREIGHT FORWARDING AND LOGISTICS** COMPANY IN 2020 FOR IMPORT AND EXPORT OF GOODS AND INTER-ISLAND FREIGHT FORWARDING IN INDONESIA.
- ❑ **NADIRA PERMATA MANDIRI** HAS VARIOUS EXPERIENCES IN HANDLING IMPORT AND EXPORT OF GOODS IN LCL (Less Container Load), FCL (Full Container Load), GENERAL CARGO, PROJECT CARGO AND WAREHOUSING.
- ❑ **NADIRA PERMATA MANDIRI** HAS AN EXTENSIVE NETWORK OF CUSTOMERS, BOTH DOMESTIC AND OVERSEAS, WHO REQUIRE FREIGHT FORWARDING, CUSTOMS CLEARANCE, PORT HANDLING, WAREHOUSING AND DOOR-TO-DOOR LOGISTICS SERVICES.

VISION

BECOME A PREMIUM, COMPETENT, RELIABLE AND TRUSTED FREIGHT FORWARDING AND LOGISTICS COMPANY

MISSION

- ❑ **DEVELOP ALL POTENTIALS AND RESOURCES OWNED BY THE COMPANY TO IMPROVE THE QUALITY OF THE FINAL RESULTS OF WORKS/SERVICES**
- ❑ **PROVIDE MAXIMUM CONTRIBUTION AND GIVE OUR BEST FOR COMPANY'S BUSINESS DEVELOPMENT**
- ❑ **PROVIDE EXCELLENT SERVICES AND SOLUTIONS PROVIDING ADDED VALUE TO CUSTOMERS**
- ❑ **CONDUCT TIMELY, ORGANIZED AND STRUCTURED WORK ALL THE TIMES**

CONTACT

HEAD OFFICE :

KIRANA TWO OFFICE TOWER
 JL. BOULEVARD TIMUR NO. 88, RT.5/RW.2
 KELAPA GADING TIMUR, KEC. KELAPA
 GADING JAKARTA UTARA – DKI JAKARTA
 14240 INDONESIA



BRANCH OFFICE :

JL. KALIMAS BARU NO. 82 A
 BU GUDANG PUSKOPAD
 SURABAYA UTARA

EMAIL :

cs@nadirapermata.com

TELEPON/FAX :

021-24524009

MANAGEMENT

BOARD OF COMMISSIONER :

Tomy Gunawan (Chairman)

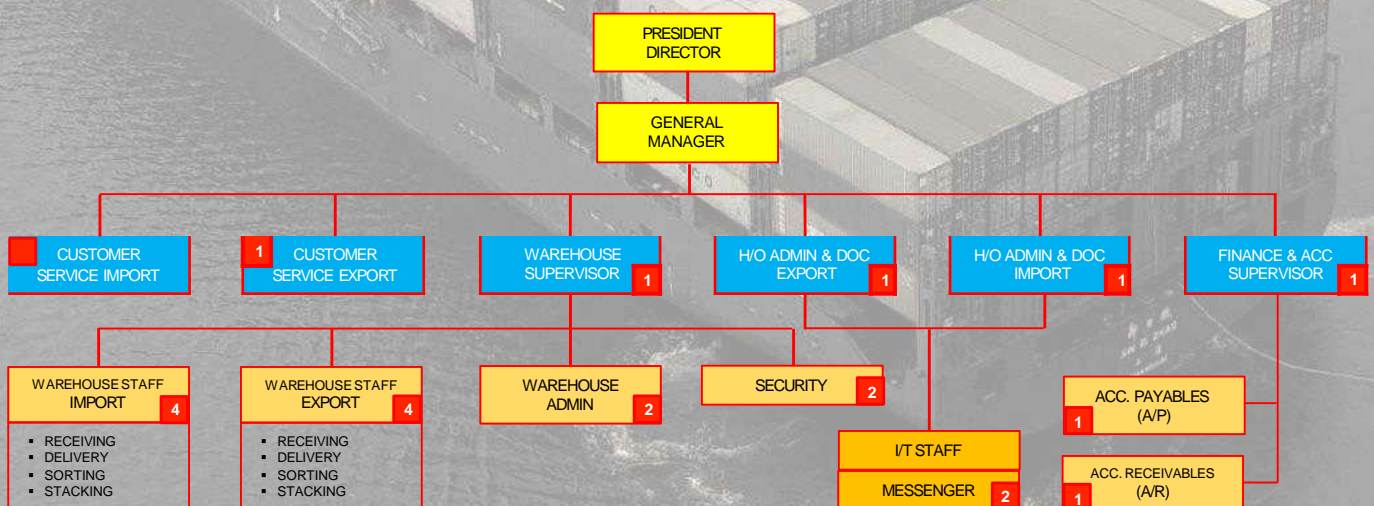
BOARD OF DIRECTOR :

Nova Jusung (President Director)

Yeni Supriatna (Marketing Director)

Rohmad (Finance Director)

ORGANIZATION STRUCTURE



ISO 9001:2015 ISO 45001:2018

BUSINESS ACTIVITIES

- WAREHOUSING (GENERAL AND CONSOLIDATOR EXPORT)
- LAND, SEA, AIR TRANSPORTATION
- FREIGHT FORWARDING (IMPORT & EXPORT)
- LCL & FCL CARGO HANDLING
- CUSTOMS CLEARANCE
- PROJECT CARGO

FLET DIVERSITY

- 40' TRAILERS
- LOW BED TRAILERS
- SLIDING TRAILERS
- MULTI-AXLE TRAILERS
- TRONTON TRUCK 20 TONS CAPACITY
- FUSO TRUCK 7 TONS CAPACITY
- BOX TRUCK COLT DIESEL DOUBLE (CDD)
- 5 TONS CAPACITY
- FORKLIFT 3 TONS TO 25 TONS
- MOBILE CRANE & CRAWLER CRANE WITH VARIOUS CAPACITIES



EXPORT CONSOLIDATOR

NADIRA PERMATA MANDIRI LESS THAN CONTAINER LOAD (LCL) WAREHOUSE IS A CUSTOMS BONDED FACILITY WHICH IS LOCATED AROUND 5 KMS FROM SURABAYA CONTAINER TERMINAL (TERMINAL PETIKEMAS SURABAYA), PORT OF TANJUNG PERAK, SURABAYA, EAST JAVA

THE WAREHOUSE HAS A COVERED STORAGE AREA OF 1.875 M² AND IS ABLE TO HOLD UP TO 100 TEUS. THE WAREHOUSE IS EQUIPED WITH FORKLIFTS AND MOVABLE RAMPS FOR UNSTUFFING CONTAINER AND LOADING ONTO TRUCK OPERATIONS.

THE WAREHOUSE HAS CLOSED CIRCUIT TV CAMERAS (CCTV) FOR SECURITY SURVEILANCE.

THE CLEARANCE AND DELIVERY OF CARGO IS DICTATED BY CUSTOMS AND IS ALSO SUBJECTED TO DUTIES AND TAXES BASED ON THE CUSTOMS & EXCISE ACT.

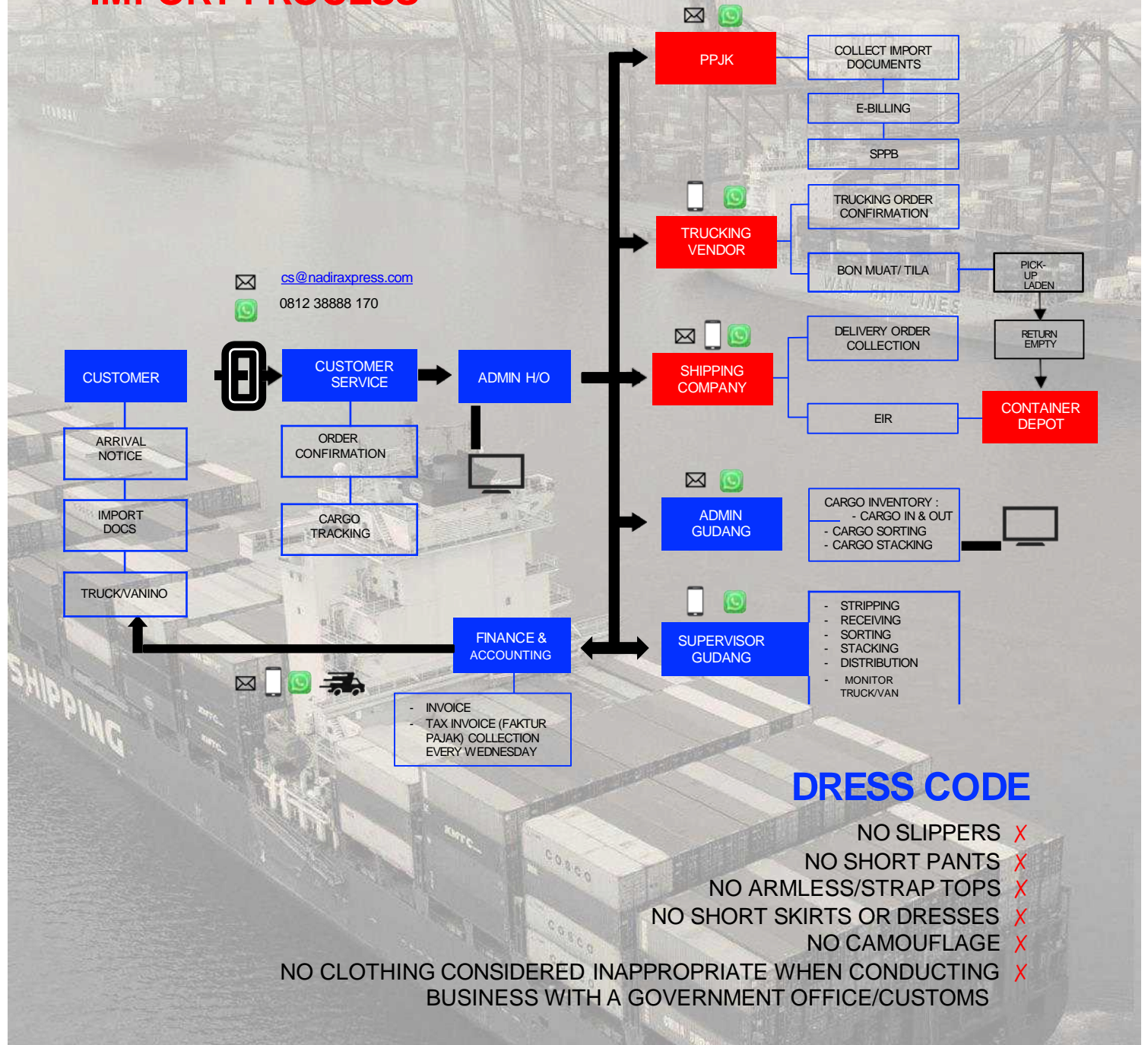
SERVICE LEVEL AGREEMENT

- TO PROVIDE LCL SERVICES FOR EXPORT AND IMPORT ACTIVITIES IN CUSTOMS BONDED FACILITY (TPS BEA-CUKAI)
- TO PROVIDE LCL SERVICES FOR EXPORT AND IMPORT
- TO PROVIDE INFORMATION TECHNOLOGY BASED ON SERVICES TO LCL & FCL ACTIVITIES (CARGO TRACKING & REAL-TIME STATUS)
- COORDINATE PROPERLY AND CORRECTLY WITH ALL RELATED PARTIES → PPJK (CUSTOMS BROKER), WAREHOUSE OPERATIONS & OTHER STAKEHOLDERS
- IMPLEMENT DWELLING TIME EFFICIENTLY AND BRIEFLY FOR FOLLOWING DATA AND DOCUMENTS INPUT FOR IMPORT AND EXPORT
- TO MAKE INVOICE & PREPARE OTHER SUPPORTING DOCUMENTS RAPIDLY



LCL SERVICES

IMPORT PROCESS



DRESS CODE

- NO SLIPPERS X
- NO SHORT PANTS X
- NO ARMLESS/STRAP TOPS X
- NO SHORT SKIRTS OR DRESSES X
- NO CAMOUFLAGE X
- NO CLOTHING CONSIDERED INAPPROPRIATE WHEN CONDUCTING BUSINESS WITH A GOVERNMENT OFFICE/CUSTOMS X





FCL SERVICES

- DOOR TO DOOR SERVICE
- LAND, SEA, AIR TRANSPORTATION FOR IMPORT, EXPORT, INTER-CITY & INTER-ISLAND
- WAREHOUSING & CARGO DISTRIBUTION
- LOADING & UNLOADING WORKS USING VARIOUS LIFTING EQUIPMENT

CUSTOMS CLEARANCE

- IMPORT PERMIT & OTHER CUSTOMS FACILITIES ARRANGEMENT
- IMPORT NOTIFICATION SERVICE (PIB) & EXPORT NOTIFICATION SERVICE (PEB)
- CUSTOMS CLEARANCE PROCESSING AT CUSTOMS OFFICE ALL OVER INDONESIA
- IMPORT & EXPORT CUSTOMS CLEARANCE CONSULTANCY

PROJECT CARGO

- TRANSPORTATION, HANDLING & LOGISTICS FOR PROJECT
- HANDLING & TRANSPORTING HEAVY/OVER-WEIGHT & OVER-SIZED CARGO
- MOVING, DISMANTLING & SETTING MANUFACTURING EQUIPMENT, OIL RIG, ETC.

WORKSPACE



TAMPAK DEPAN RUANG KANTOR UNTUK KEGIATAN ADMINISTRASI GUDANG



RUANG ADMINISTRASI DAN KEUANGAN



RUANG MEETING



RUANG UTAMA BEA DAN CUKAI KETIKA MELAKUKAN STUFFING

WAREHOUSE



POSISI GUDANG NAMPAK DARI DEPAN



HALAMAN DEPAN GUDANG



PAGAR PEMBATAS ANTARA GUDANG EKSPOR DAN GUDANG UMUM



BRIEFING DAN FOTO BERSAMA SEBELUM MEMULAI PEKERJAAN

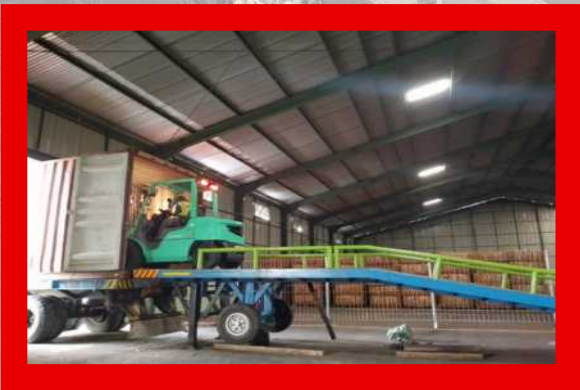
LOADING DOCK



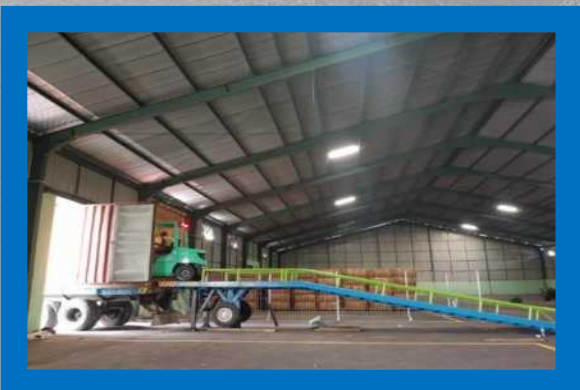
LOADING DOCK LANGSUNG
MENGARAH KE PINTU GUDANG



LOADING DOCK MEMBANTU
DAN MEMPERMUDAH PROSES
BONGKAR MUAT



PENGGUNAAN LOADING DOCK
DENGAN FORKLFT
MEMPERMUDAH STUFFING
PADA EMPTY YANG LEBIH
TINGGI



HANDLING STORAGE



COCOFIBER



MESIN DAN TRAKTOR

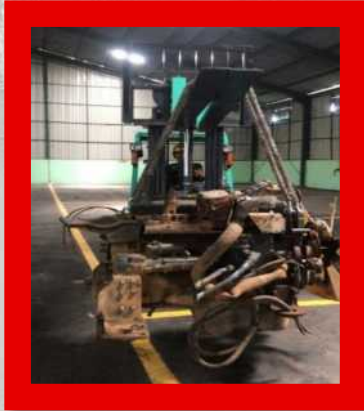


BATU APUNG



PROSES STRORAGE
COCOFIBER DENGAN ALAT
MH FORKLIFT

STRIPPING/STUFFING



STRIPPING MESIN
MENGUNAKAN FORKLIFT



STUFFING BATU APUNG
DENGAN TKBM



PENGECEKAN BUNGA PALA
SEBELUM DI STUFFING



STRIPPING DAN STORAGE
COCOFIBER

EXPERIENCES



INSPECTION LORRY CUSTOMS CLEARANCE
HANDLING & DELIVERY
ACEH, PADANG, JAKARTA, MAKASSAR

DIRECTORATE GENERAL OF RAILWAYS MINISTRY OF
TRANSPORTATION OF THE REPUBLIC OF INDONESIA - 2022



HANDLING, DELIVERY & ARRANGEMENT OF 29
UNITS OF CONSERVATION ROLLING STOCKS FROM
DAOP 8 SURABAYA TO TPSSK PASTIRBUNGUR

PT KERETA API INDONESIA (PERSERO) - 2022



HANDLING, DELIVERY & ARRANGEMENT OF 53 OF
CONSERVATION ROLLING STOCKS FROM DAOP 1
JAKARTA, BALAI YASA MANGGARAI & DAOP 2
BANDUNG TO TPSSK PASTIRBUNGUR

PT KERETA API INDONESIA (PERSERO) - 2022



TRANSPORTING, UNLOADING & SETTING OF 1
UNIT - 500 TONS STAMPING MACHINE

ADYAWINSA STAMPING INDUSTRIES - 2020

EXPERIENCES



DELIVERY OF 100 UNITS OF KKBW
CARRIAGES
JAKARTA - LAMPUNG

PT Kereta Api Logistik - 2021



HANDLING, DELIVERY & ARRANGEMENT OF 53
OF CONSERVATION ROLLING STOCKS FROM
DAOP 1 JAKARTA, BALAI YASA MANGGARAI &
DAOP 2 BANDUNG TO TPSSK PASTIRBUNGUR

PT Kereta Api Logistik - 2021



RAIL FREIGHT WORK AND ACCESSORIES
AND MATERIAL DISTRIBUTION
GENUK, SEMARANG, SERANG, MERAK

PT Kereta Api Logistik - 2021



DELIVERY WORK OF 1 UNIT MULTI TIE
TAMPER
BARRU, SULAWESI SELATAN – BIREUN ACEH

PT Kereta Api Logistik - 2021